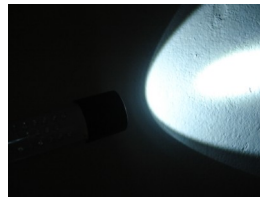


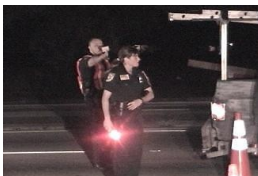
## Tri-color rechargeable flashlight



### Features :

- ◆ Rechargeable type
- ◆ Rubber cover for recharge hole designed.
- ◆ Rugged aerospace-grade aluminum body, Type II anodized in black
- ◆ O-ring sealed, weatherproof
- ◆ Shockproof
- ◆ Toughened ultra clear glass lens with AR coating .
- ◆ Three switch for red and flashing red /green/white light which offer the possibility to switch between three light mode easily and fastly
- ◆ 2 Ni-Cd battery with discharge protected
- ◆ White Top light coming from 1W CREE LED, over 170 Lumens
- ◆ Red/Green light coming from long life powerful LED
- ◆ Accessories included: Charger 220V 450mA, Car charger 12V, Battery

### Fields of Applications :



*Police*



*Military*



*Railway*



*Civil defence*